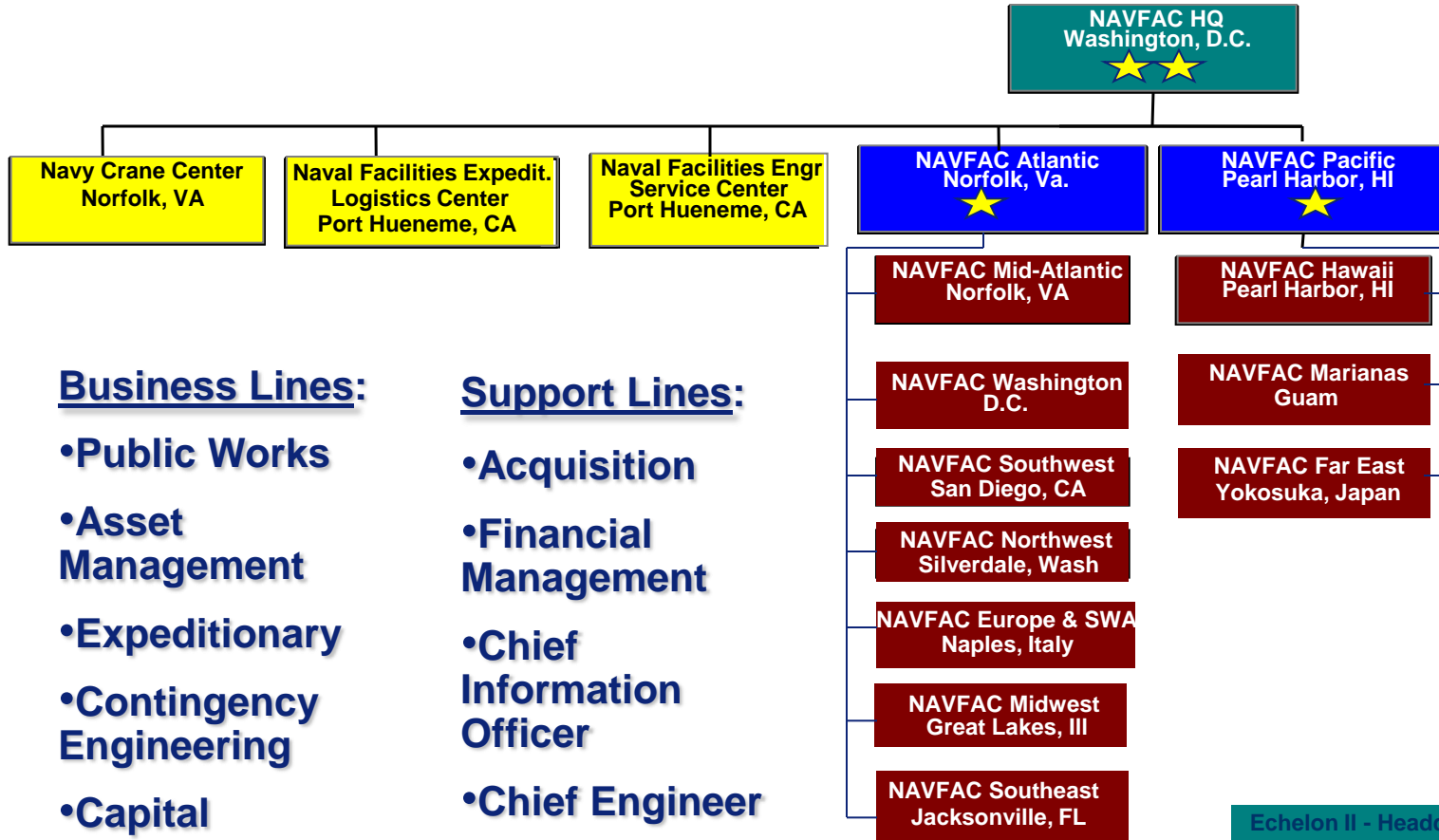




ACEC Federal Markets Conference

31 March 2011

Joseph E. Gott, P.E.
Chief Engineer, and
Director, Capital Improvements



Business Lines:

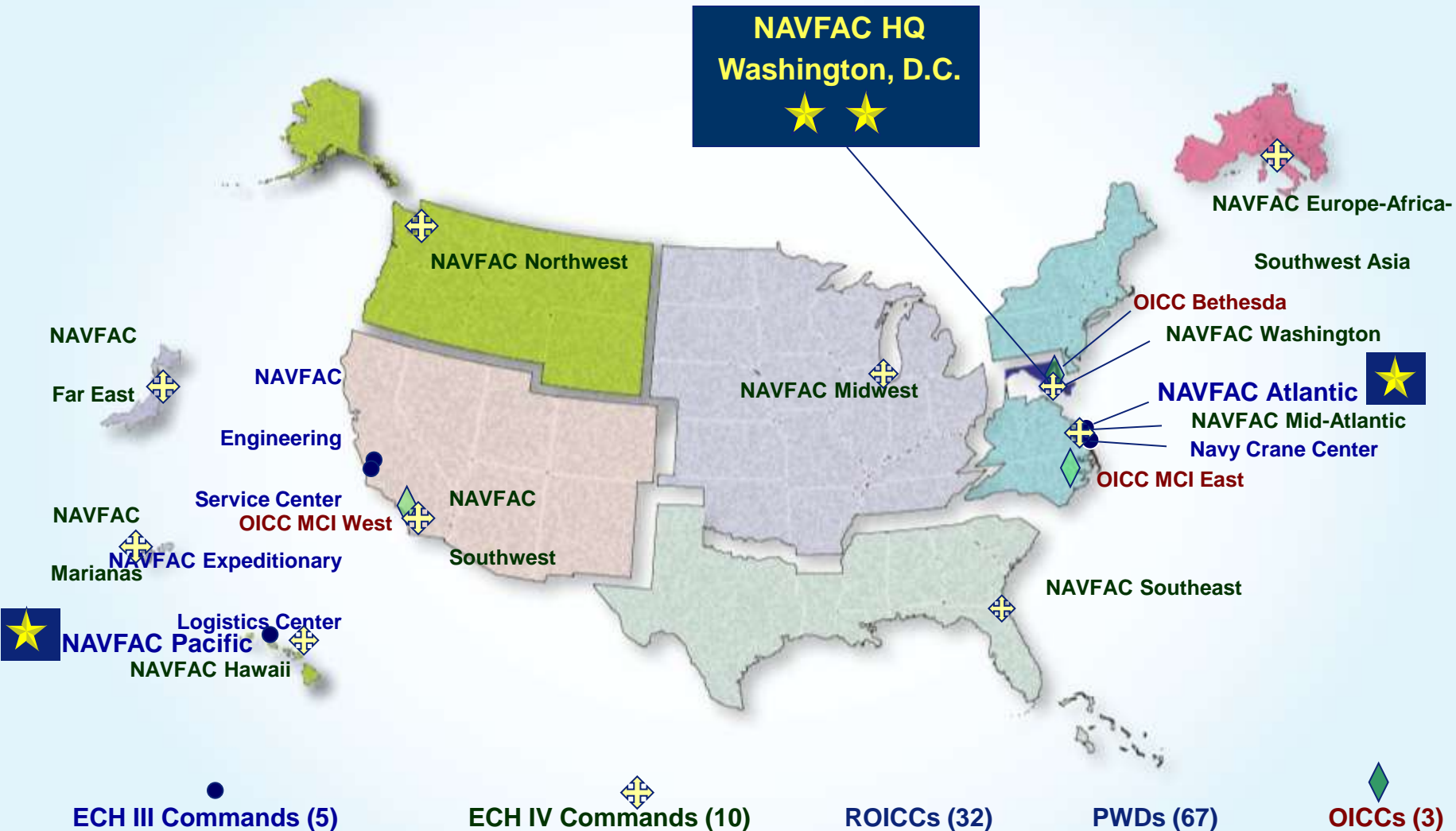
- Public Works
- Asset Management
- Expeditionary
- Contingency Engineering
- Capital Improvements
- Environmental

Support Lines:

- Acquisition
- Financial Management
- Chief Information Officer
- Chief Engineer
- Counsel



Worldwide Facilities Engineering Expertise



Globally Aligned to Support Fleet/Warfighter

FY12 PresBud Submit

Department of Navy Highlights



• MILCON \$2.5B

- Historical high (FY10 was \$3.8B)
- 55% USMC, 45% Blue Navy
- Balanced portfolio addresses

FY12	MCON	MCNR	TOTAL	%
USN	\$1,111M	\$17M	\$1,128M	45%
USMC	\$1,350M	\$ 9M	\$1,359M	55%
Total	\$2.5B	\$26M	\$2,487M	

- Warfighter needs & new mission/systems
- Warfighter & family Quality of Life
- USMC Commandant initiative to eliminate inadequate barracks by 2014
- CNO initiative to eliminate Homeport Ashore deficit by 2016
- Critical Infrastructure
- Energy

• Family Housing \$469M

- Modest increase, inventory largely privatized

• BRAC \$155M –

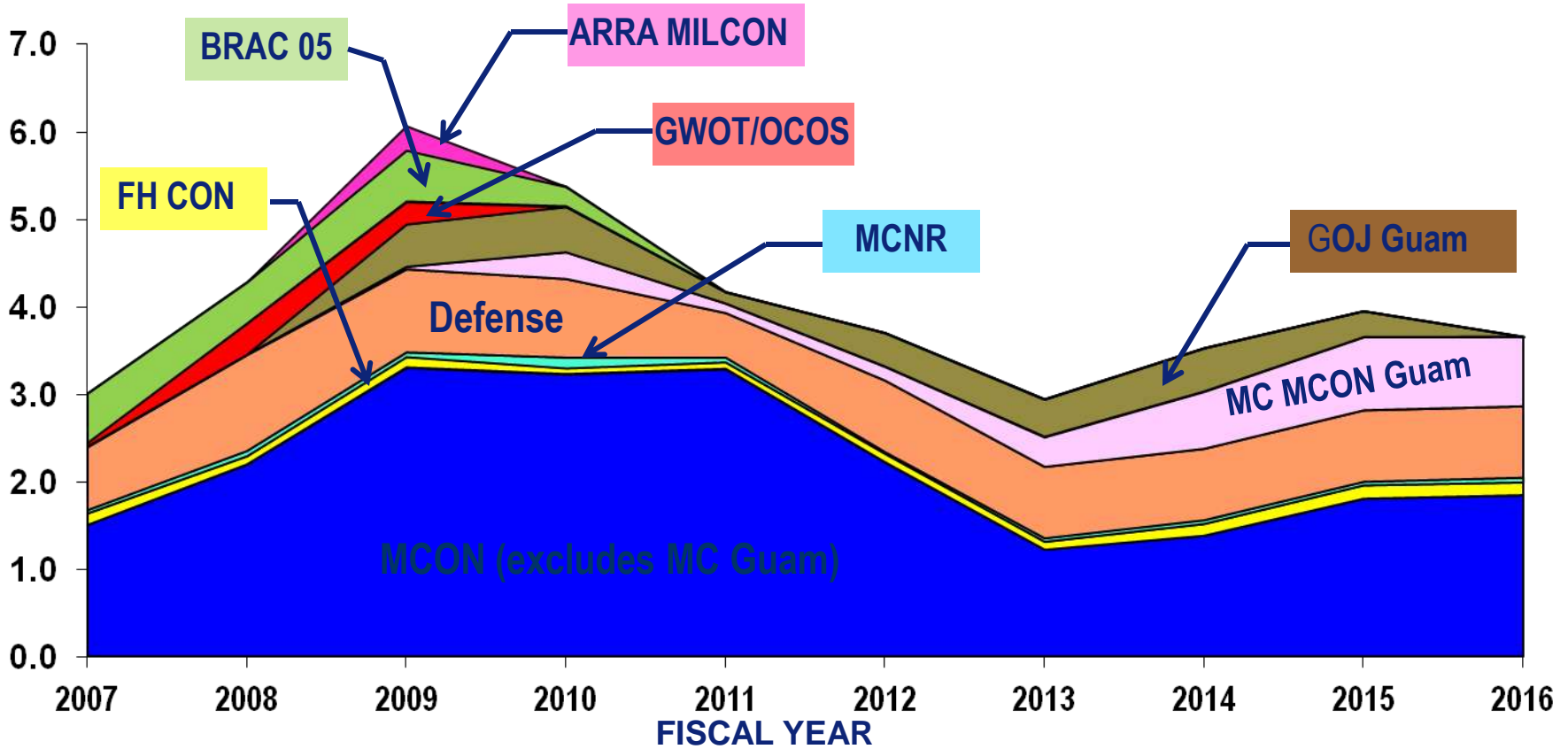
- Outfitting, environmental clean up & caretaker costs

• SECNAV Energy Goals

NAVFAC MILCON CONSTRUCTION & GOJ PROGRAMMED AMOUNT* (Construction Funds Only; Excludes MILCON Design Funds)



\$ BILLIONS



* Programmed Amount includes SIOH, PCAS, & contingency

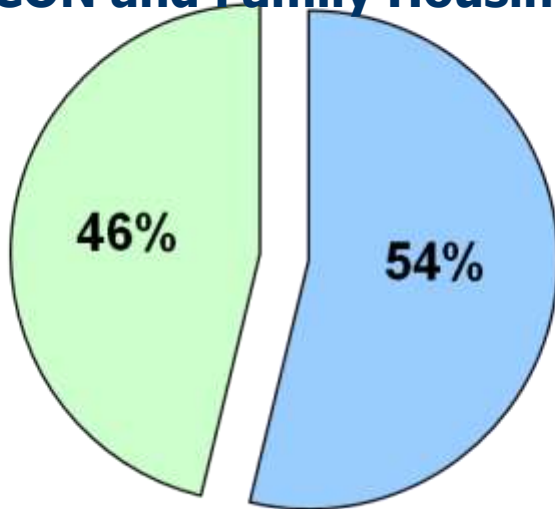
FY2012 through FY2016 based on POM 12 PRESBUD Submit

Historical vs Projected Workload Navy and Marine Corps



Historical FYs 04-09

(MCON and Family Housing)



Without Family Housing –

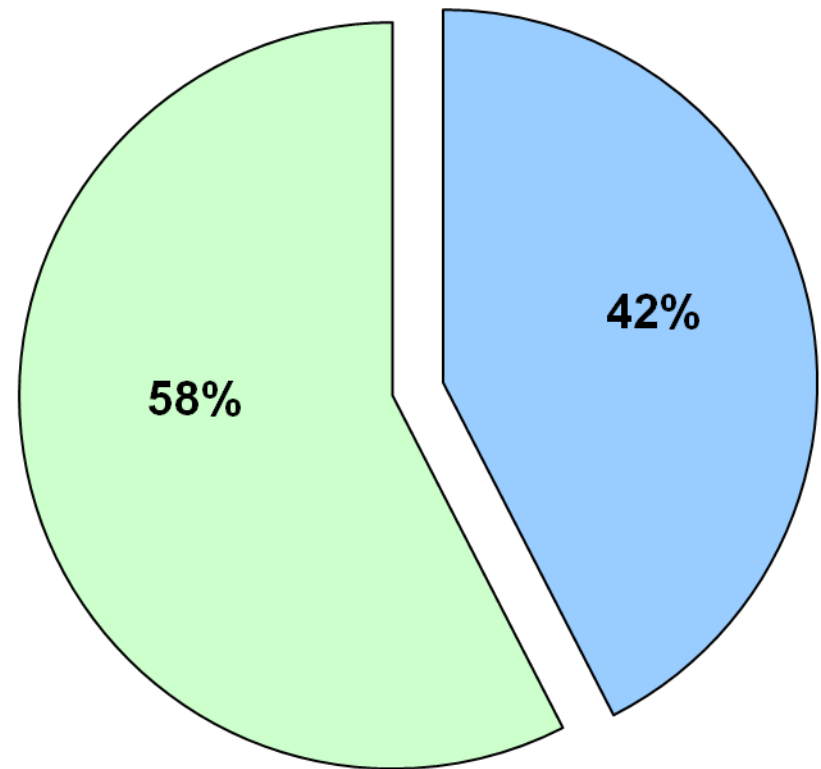
Navy 56%, USMC 44%

USMC

Navy

Projected FYs 10-16

(MCON Construction only)



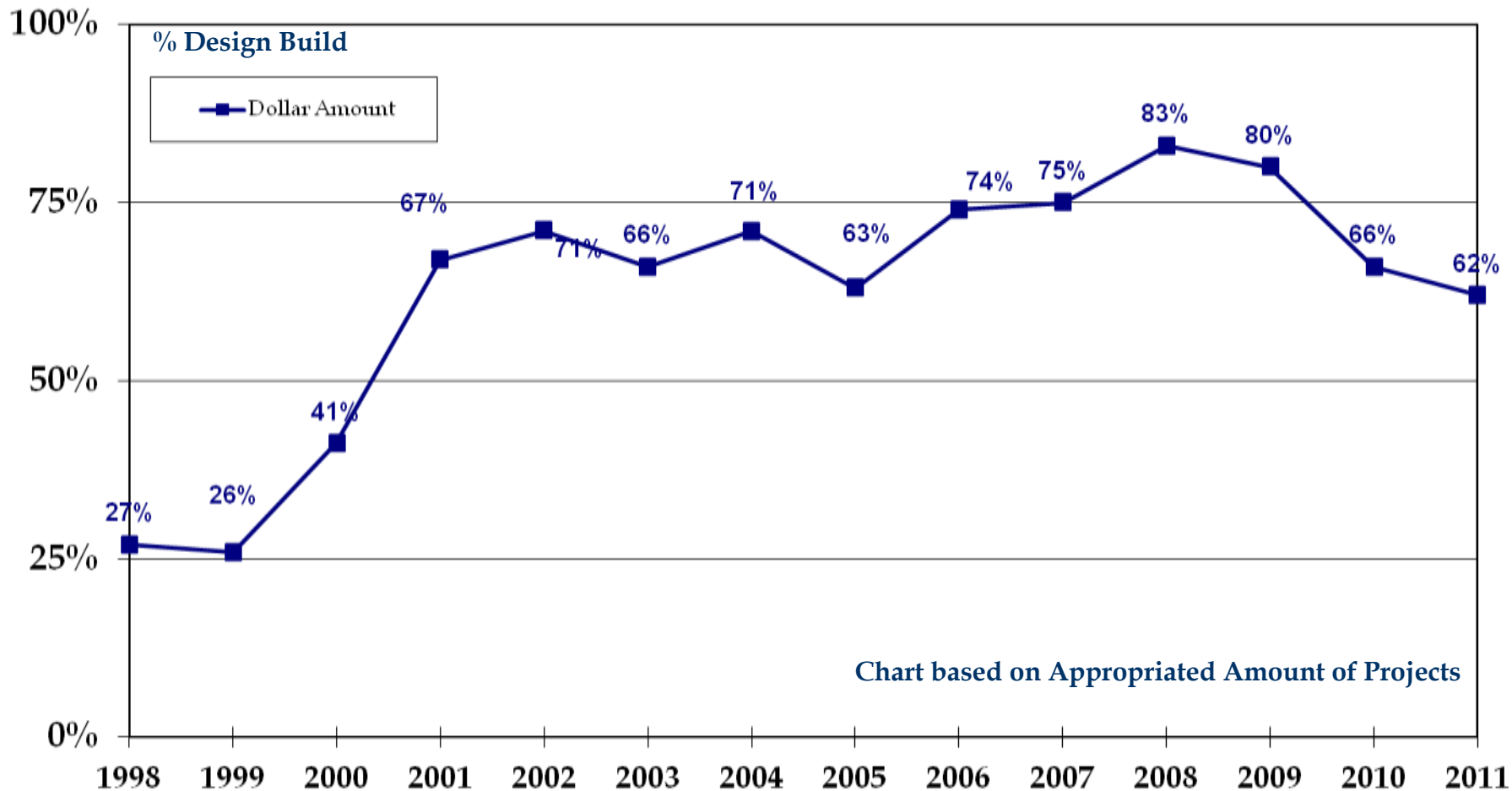
MILCON Workload



CATEGORY	% WORKLOAD
Maintenance & Production	14%
Unaccompanied Personnel Housing	10%
Land Operational Facilities	9%
Utilities, Land, & Site Improvements	24%
Administrative	5%
Waterfront Operational Facilities	3%
Training Facilities	5%
Community Facilities	11%
Medical Facilities	14%
Other	5%

COMPONENT	% WORKLOAD
Southwest	23%
Mid-Atlantic	23%
Marianas	5%
Southeast	10%
Washington	19%
Europe	3%
Hawaii	6%
Northwest	5%
Far East	3%
Midwest	3%

MCON Design-Build Trend Line



DsnBld PA:	132M	168M	142M	395M	590M	810M	667M	599M	764M	829M	1697M	2,472M	2,361M	2,106M
Pgm Amt:	652M	626M	546M	957M	878M	1142M	1198M	963M	1111M	1052M	2075M	3,073M	3,577M	3,375M

DB Total Ownership Cost (TOC) Template



New Tri-Service tool to evaluate TOC of DB proposals
NAVFAC Industry Forum planned for May 2011 (FedBizOps)

- **Simplified life cycle cost analysis approach**
 - Only looks at most significant TOC cost drivers
 - Initial design & construction cost
 - Contractor's proposed 40 year energy consumption
 - Use any AHSRAE approved whole bldg energy simulation software
 - Contractor's proposed 40 year sustainment cost
 - Only select building components most affecting TOC
- **Minimal contractor documentation required**
- **Government provides baseline TOC analysis**
 - Assumes minimum IBC code requirements
 - Energy analysis based on ASHRAE 2007 standards
- **Pilot program July 2011; Full implementation FY 2012**

Acquisition Strategy



- **Today's Market - Opportunities**
 - ARRA is complete
 - **Military Construction Workload downward trend**
 - O&M projects remain constant
 - **Continued emphasis on energy efficiency and security**

Acquisition Strategy



- **Design-Build remains primary vehicle**
 - Intend to maintain DB Acquisitions at ~75% of MILCON program
 - FY10 & 11 lower than goal due to large complex projects requiring full plans and specification
 - Shift to more in-house design to enhance/maintain core technical competencies
 - Standard Technical Evaluation Factors in Source Selections across Command
 - Continue use of Desirables & Betterments
 - Lower total ownership cost
 - Lower total energy use

Energy Goals Ashore



Federal Energy Mandates

- EPACT 2005
- EISA 2007
- Executive Order 13423 & 13514

SECNAV Energy Goals Ashore

- Require the evaluation of energy factors when awarding contracts for systems and buildings
- By 2020
 - Produce at least 50% of shore-based energy requirements from alternative sources
 - 50% of DON installations will be net-zero energy consumers
 - 50% of total DON energy consumption will come from alternative sources

Significant focus to reduce energy consumption

Comprehensive strategy for collecting, managing, and sharing required data and information throughout facility life cycle

- **Reduce total ownership costs**
- **In discovery mode: identify accurate current, accessible data requirements**
- **Investigate both information management and use of modeling**

BIM - Building Information Management



- **For our customer (internal and external), to reduce total ownership costs, need to provide accurate, current, accessible facility data**
- **NAVFAC does not have a comprehensive strategy for collecting, managing, and sharing required data and information throughout facility lifecycle from planning to disposal (definition of BIM)**
- **Schedule:**
 - **POAM Developed**
 - **Completing life cycle data & information process (FY11)**
 - **Connecting GIS, Maximo, etc. (FY11)**
 - **Identifying in-house modeling projects (now)**

NAVFAC Small Business Initiatives– FY2011



- **Outreach focus areas**
 - **Service-Disabled Veteran Owned Small Business**
 - **Women-Owned Small Business concerns**
- **Upcoming Small Business Conferences**
 - **25 March: OSD AT&L Small Business Outreach and Matchmaking, Detroit MI**
 - **10-11 May: Navy Blue Coast Small Business Conference, Virginia Beach, VA**
 - **15-18 Aug: National Veterans SB Conference, New Orleans, LA**
 - **23-24 Aug: Navy Gold Coast Small Business Conference, San Diego, CA**
- **Visit: <https://smallbusiness.navfac.navy.mil>**

NAVFAC SB Achievements



US Prime Awards	FY09 (Eligible = \$9.3B)			FY10 (Eligible = \$8.9B)			FY11* (Eligible = \$1.6B)		
	Target	Dollars	Actual	Target	Dollars	Actual	Target	Dollars	Current
Small Business (SB)	41.42%	\$3.2B	34.81%	35.61%	\$3.2B	35.89%	36%	\$757.9M	46.46%
HUBZone	9.09%	\$1B	11.02%	10.2%	\$874.7M	9.81%	10%	\$181.5M	11.12%
Service-Disabled Veteran-Owned (SDVOSB)	3%	\$179.3M	1.92%	3%	\$208.5M	2.33%	2.5%	\$63M	3.86%
Small Disadvantaged Business (SDB)	19.18%	\$2.2B	24.12%	22.67%	\$2.18B	24.51%	23%	\$485.5M	29.76%
Woman-Owned (WOSB)	7.53%	\$674.8M	7.24%	5.97%	\$720.7M	8.08%	6.5%	\$150.4M	9.22%

*Data from FPDS-NG 2/28/2011. FPDS-NG Data Incomplete.

MILCON Project Solicitation & Award Forecast



- www.navfac.navy.mil
 - [Contracting Information](#)
 - [Opportunities](#)
 - [Acquisition Strategies & Forecasts](#)
 - [FY2010 MCON & MCNR Enacted Project List](#)

MILCON Solicitation/Award Forecast									
FOR PLANNING PURPOSES ONLY									
This list is not, nor is it intended to be a prediction of what military construction projects may ultimately be solicited. Projects may not be approved, and project specifics may vary prior to solicitation and/or award. Projects not included on this list may be solicited. Dates shown are for advance planning only. See FEDBIZOPS for actual solicitations.									
Acquisition Method Abbreviation Definitions - BV38: Best Value Source Selection, RFP - LP: Request For Proposal - Low Price & Past Performance, IFB/ICB: Invitation For Bid/International Competitive Bid									
Responsible Component	P number	Project Name	Activity Name	Design Method	Acquisition Tool	Acquisition Method	Programmed Amount	Projected Solicitation Date	Projected Award Date
NAVFAC Europe and SW Asia	FX85	WATER DISTRIBUTION LINE	NAVSTA ROTA SP	Design Bld Bld	MAC - General	RFP - LP	\$5,100,000	24-Nov-2008	13-Jan-2009
NAVFAC Europe and SW Asia	907	AIRCRAFT MAINTENANCE HANGAR	CAMP LEMONIER (DIBOUT)	Design Bld	Global Contingency Const (GCC)	RFP - BV38 (One Step)	\$12,830,000	15-Dec-2008	20-Mar-2009
NAVFAC Europe and SW Asia	909	AIRCRAFT PARKING APRON	CAMP LEMONIER (DIBOUT)	Design Bld	Global Contingency Const (GCC)	RFP - BV38 (One Step)	\$15,250,000	15-Dec-2008	20-Mar-2009
NAVFAC Europe and SW Asia	910	TELCOM FACILITY	CAMP LEMONIER (DIBOUT)	Design Bld	Global Contingency Const (GCC)	RFP - BV38 (One Step)	\$3,330,000	15-Dec-2008	20-Mar-2009
NAVFAC Europe and SW Asia	925	WATERFRONT DEVELOPMENT PHASE 1	NAVSUPACT BAHRAIN	Design Bld Bld	Stand Alone Construction Contract	RFP - BV38 (One Step)	\$35,520,000	18-Mar-2009	30-Jun-2009
NAVFAC Europe and SW Asia	411	FUEL STORAGE TANKS & PIPELINE REPLACEMENT	NAVSUPACT SOUDA BAY QR	Design Bld Bld	Stand Alone Construction Contract	RFP - BV38 (One Step)	\$8,000,000	18-Mar-2009	30-Jun-2009
NAVFAC Europe and SW Asia	FX82	CHANNEL AND HARBOR DREDGING	NAVSTA ROTA SP	Design Bld Bld	Stand Alone Construction Contract	IFB/ICB	\$34,020,000	21-Jun-2009	05-Oct-2009
NAVFAC Mariana	0103	RECONFIG INTERIOR FOOD #4 FLAG CIRCLE NIMITZ HLL	PWC GUAM	Design Bld	MAC - SA DB	RFP - BV38 (Two Step)	\$242,000	25-Jul-2008	28-Sep-2008
NAVFAC MIA-Atlantic	175	OSAKINS MAGAZINES RPL	NAS BRUNSWICK ME	Design Bld	MAC - LP	RFP - LP	\$8,220,000	17-Jan-2009	23-Mar-2009
NAVFAC MIA-Atlantic	891	OLF LAND ACQUISITION INC 1	NOLF WASHINGTON COUNTY NC	Land Acquisitn		RFP - BV38 (One Step)	\$15,000,000	31-May-2007	31-Aug-2007
NAVFAC MIA-Atlantic	135	GTF-BACHELOR ENLISTED QUARTERS	MCAS CHERRY POINT NC	Design Bld	Stand Alone Construction Contract	RFP - BV38 (Two Step)	\$30,100,000	11-Nov-2008	27-Mar-2009
NAVFAC MIA-Atlantic	112V	MARITIME SUBSURFACE SENSOR OPS FACILITY	NAVAL STATION NEWPORT RI	Design Bld	Stand Alone Construction Contract	RFP - BV38 (One Step)	\$15,320,000	13-Nov-2008	15-Apr-2009
NAVFAC MIA-Atlantic	223V	RENOVATE V47 FOR COMBAT CRAFT FACILITY	NAVSTA NORFOLK VA	Design Bld	MAC - Industrial	RFP - BV38 (One Step)	\$7,140,000	13-Nov-2008	31-Mar-2009
NAVFAC MIA-Atlantic	615	APRON EXPANSION, PHASE 1	MCB CAMP LEJEUNE NC	Design Bld Bld	Stand Alone Construction Contract	RFP - BV38 (One Step)	\$8,830,000	15-Nov-2008	30-Mar-2009

- For planning purposes
- See FEDBIZOPS for actual solicitations

FY11 MILCON Projects

FY 11 MCON, MCNR, Family Housing, Defense Project List



Installation	Title	Cost (\$000)	Design Level
ANDERSEN AFB GUAM SAC	PRTC-RED HORSE HQ/ENG FAC	8,000,000	DB
ANDERSEN AFB GUAM SAC	PRTC-COMMANDO WARRIOR OPEN BAY BARRACKS (TFI)	11,800,000	DB
ANDERSEN AFB GUAM SAC	PRTC-COMBAT COMMUNICATIONS OPERATIONS FACILITY	9,200,000	DB
ANDERSEN AFB GUAM SAC	GUAM STRIKE SOUTH RAMP UTILITIES PHASE 1	12,200,000	DB
ANDERSEN AFB GUAM SAC	GUAM STRIKE OPS GROUP (TFI)	9,100,000	DB
ANDREWS AFB MD	REPLACE FUEL STORAGE AND DISTRIBUTION FACILITIES	14,000,000	DBB
AVIANO AB IT USAFE	DORMITORY (RM 144)	19,000,000	DB
AVIANO AB IT USAFE	AIR SUPPORT OPERATIONS SQUADRON (ASOS) FACILITY	9,500,000	DBB
BARKING SANDS HI PMRF	AEGIS ASHORE (AA) MISSILE DEFENSE TEST COMPLEX	68,500,000	DBB
BARKSDALE	WEAPONS LOAD CREW TRAINING FACILITY	18,300,000	DB
BEAUFORT SC MCAS	TRAINING AND SIMULATOR FACILITY	46,240,000	DBB
BEAUFORT SC MCAS	AIRCRAFT HANGAR, VMFAT-502	46,550,000	DBB
BEAUFORT SC MCAS	ACUIZ LAND ACQUISITION	21,190,000	
BEAUFORT SC MCAS	PHYSICAL FITNESS CENTER	15,430,000	DBB
BETHESDA MD NATNAVMEDCOM	BRAC-TRAFFIC MITIGATION MEASURES AT WRNMMC INCR 2	7,600,000	DB
BETHESDA MD NATNAVMEDCOM	TRANSIENT WOUNDED WARRIOR LODGING	62,900,000	DB
BETHESDA MD NATNAVMEDCOM	NNMC PARKING EXPANSION	17,100,000	DB
BLOUNT ISLAND FL, MCSF	CONTAINER STAGING AND LOADING LOT	5,990,000	DBB
BLOUNT ISLAND FL, MCSF	HARDSTAND EXTENSION	17,930,000	DBB
BLOUNT ISLAND FL, MCSF	CONTAINER STORAGE LOT	4,910,000	DBB
BLOUNT ISLAND FL, MCSF	CONSOLIDATED WAREHOUSE FACILITY	17,260,000	DB
BLOUNT ISLAND FL, MCSF	WASHRACK EXPANSION	9,690,000	DBB

FY 11 MCON, MCNR, Family Housing, Defense Project List



Installation	Title	Cost (\$000)	Design Level
BLOUNT ISLAND FL, MCSF	PAINT AND BLAST FACILITY	18,840,000	DBB
BOLLING AFB DC	REPLACE PARKING STRUCTURE, PHASE 1	3,000,000	
CAMP LEJEUNE NC MCB	GTF-MESS HALL (FRENCH CREEK)	25,960,000	DB
CAMP LEJEUNE NC MCB	HANGAR (MCAS NEW RIVER)	73,010,000	DB
CAMP LEJEUNE NC MCB	MAINTENANCE HANGAR (HMLA) (MCAS NEW RIVER)	74,260,000	DB
CAMP LEJEUNE NC MCB	MARINE CORPS ENERGY INITIATIVE	9,950,000	DB
CAMP LEJEUNE NC MCB	GTF-MESS HALL ADDITION (COURTHOUSE BAY)	2,553,000	DBB
CAMP LEJEUNE NC MCB	GTF-EOD ADDITION, 2ND MAR LOG GROUP (FRENCH CREEK)	7,420,000	DBB
CAMP LEJEUNE NC MCB	MOTOR TRANSPORTATION/COMM MAINT FAC (CAMP GEIGER)	18,470,000	DB
CAMP LEJEUNE NC MCB	GTF-BACHELOR ENLISTED QUARTERS (FRENCH CREEK)	43,640,000	DB
CAMP LEJEUNE NC MCB	GTF-BACHELOR ENLISTED QUARTERS (CAMP JOHNSON)	46,550,000	DB
CAMP LEJEUNE NC MCB	BACHELOR ENLISTED QUARTERS (WALLACE CREEK NORTH)	46,290,000	DB
CAMP LEJEUNE NC MCB	GTF-BACHELOR ENLISTED QUARTERS (WALLACE CREEK)	51,660,000	DB
CAMP LEJEUNE NC MCB	GTF-ARMORY II MEF,(WALLACE CREEK)	12,280,000	DB
CAMP LEJEUNE NC MCB	GTF-2ND INTEL BN MAINT/OPS COMPLEX (HADNOT POINT)	90,270,000	DB
CAMP LEJEUNE NC MCB	GTF-MAINT/OPS COMPLEX, 2ND ANGLICO (HADNOT POINT)	36,100,000	DB
CAMP LEJEUNE NC MCB	GTF-BACHELOR ENLISTED QUARTERS (COURTHOUSE BAY)	42,330,000	DB
CAMP LEJEUNE NC MCB	GTF-BACHELOR ENLISTED QUARTERS (COURTHOUSE BAY)	40,780,000	DB
CAMP LEJEUNE NC MCB	GTF-BACHELOR ENLISTED QUARTERS (RIFLE RANGE)	55,350,000	DB
CAMP LEJEUNE NC MCB	GTF-UTILITY EXPANSION (FRENCH CREEK)	56,050,000	DBB
CAMP LEJEUNE NC MCB	GTF-UTILITY EXPANSION (HADNOT POINT)	56,470,000	DBB
CAMP LEJEUNE NC MCB	REPLACE SCHOOL BY ADDITION TO TARAWA TERRACE II ES	16,654,000	DB

FY 11 MCON, MCNR, Family Housing, Defense Project List



Installation	Title	Cost (\$000)	Design Level
CAMP LEMONIER DJIBOUTI	GENERAL WAREHOUSE	7,324,000	DBB
CAMP LEMONIER DJIBOUTI	PAVE EXTERNAL ROADS	3,824,000	DBB
CAMP PENDLETON CA MCAS	GTF-MALS-39 MAINTENANCE HANGAR EXPANSION	48,230,000	DB
CAMP PENDLETON CA MCAS	GTF-CNATT/FRS AVIATION TRAINING & BEQ	66,110,000	DB
CAMP PENDLETON CA MCB	GTF-NORTH REG TERTIARY TREATMENT PLANT INC 2 OF 2	30,000,000	DB
CAMP PENDLETON CA MCB	SMALL ARMS MAGAZINE (EDSON RANGE)	3,760,000	DB
CAMP PENDLETON CA MCB	GTF-TRUCK COMPANY OPERATIONS COMPLEX (AREA 33)	53,490,000	DB
CAMP PENDLETON CA MCB	GTF-BACHELOR ENLISTED QUARTERS (LAS FLORES)	37,020,000	DB
CAMP PENDLETON CA MCB	BACHELOR ENLISTED QUARTERS (13 AREA)	42,864,000	DB
CAMP PENDLETON CA MCB	MARINE CORPS ENERGY INITIATIVE	9,950,000	DB
CAMP PENDLETON CA MCB	GTF-CONVEYANCE/WATER TREATMENT	100,700,000	DB
CHARLESTON AFB CHASN SC	CIVIL ENGINEERING COMPLEX	15,000,000	
CHERRY POINT NC MCAS	GTF-BACHELOR ENLISTED QUARTERS	42,500,000	DB
CHERRY POINT NC MCAS	GTF-STATION INFRASTRUCTURE UPGRADES	5,800,000	DBB
CHERRY POINT NC MCAS	MISSILE MAGAZINE	13,420,000	DBB
CHERRY POINT NC MCAS	MARINER'S BAY LAND ACQUISITION (ALF BOGUE)	3,790,000	
GUAM MI NAVHOSP	HOSPITAL REPLACEMENT	70,000,000	DBB
GUANTANAMO BAY CUBA NS	REPLACE BASE HOUSING	37,169,000	DBB
HICKAM AFB HI PACAF	ALTER FUEL STORAGE TANKS	8,500,000	
IWAKUNI JAPAN MCAS	WHOLEHOUSE REVITALIZATION MIDRISE 906	11,016,000	DB
KANEOHE BAY HI MCB	PHYSICAL FITNESS CENTER, CAMP SMITH	29,960,000	DB
KANEOHE BAY HI MCB	WATERFRONT OPERATIONS FACILITY	19,130,000	DB

FY 11 MCON, MCNR, Family Housing, Defense Project List



Installation	Title	Cost (\$000)	Design Level
KANEOHE BAY HI MCB	GTF-BACHELOR ENLISTED QUARTERS	90,530,000	DB
KINGS BAY GA NSB	WATERFRONT EMERGENCY POWER	15,660,000	DBB
KINGS BAY GA NSB	SECURITY ENCLAVE AND VEHICLE BARRIERS	45,004,000	DBB
MIRAMAR CA MCAS	PARKING APRON/TAXIWAY EXPANSION	66,500,000	DB
MIRAMAR CA MCAS	HANGAR 4	33,620,000	DB
MIRAMAR CA MCAS	GTF-AIRCRAFT MAINTENANCE HANGAR	90,490,000	DB
NAF ATSUGI JA	MH-60R/S TRAINER FACILITY	6,908,000	DB
NAS PATUXENT RIVER	BROAD AREA MARITIME SURVEILLANCE T&E FACILITY	42,211,000	DB
NAVAL BASE KITSAP	LIMITED AREA PRODUCTION/STRG CMLX INC 7 OF 7	19,116,000	DBB
NAVAL BASE KITSAP	WATERFRONT RESTRICTED AREA EMERGENCY POWER	24,913,000	DB
NAVAL BASE KITSAP	LIMITED AREA EMERGENCY POWER	15,810,000	DB
NAVAL BASE KITSAP	CSDS-5 LABORATORY EXPANSION, PHASE 1	16,170,000	DB
NAVBASE Guam	DPRI-APRA HARBOR WHARF IMPRV, INC 2 OF 2	40,000,000	DB
NAVBASE Guam	DPRI-DEFENSE ACCESS ROAD IMPROVEMENTS (AGANA)	66,730,000	
NAVSUPPACT BAHRAIN	WATERFRONT DEVELOPMENT, PHASE 3	63,871,000	DBB
NAVSUPPACT BAHRAIN	NAVCENT AMMUNITION MAGAZINES	89,280,000	DBB
NAVSUPPACT BAHRAIN	OPERATIONS AND SUPPORT FACILITIES	60,002,000	DBB
NAVSUPPACT NORFOLK NSY	SHIP REPAIR PIER REPLACEMENT INC 2 OF 2	100,000,000	DBB
NEW ORLEANS LA HDQ 4TH MA	MARINE CORPS RESERVE CENTER (YAKIMA WA AFRC)	13,844,000	DB
NEW ORLEANS LA NAS JRB	CONSTRUCT JOINT AIR TRAFFIC CONTROL FACILITY	16,281,000	DBB
NEWPORT RI NAVSTA	ELECTROMAGNETIC SENSOR FACILITY	27,007,000	DBB
NORFOLK VA NS	PIERS 9 AND 10 UPGRADES FOR DDG 1000	2,400,000	DBB

FY 11 MCON, MCNR, Family Housing, Defense Project List



Installation	Title	Cost (\$000)	Design Level
NORFOLK VA NS	PIER 1 UPGRADES TO BERTH USNS COMFORT	10,035,000	DBB
NSA SOUTH POTOMAC	AGILE CHEMICAL FACILITY, PHASE 2 (NSF INDIAN HEAD)	34,238,000	DBB
PEARL HARBOR HI NS	JOINT POW/MIA ACCOUNTING COMMAND	99,328,000	DBB
PEARL HARBOR HI NS	CTR FOR DISASTER MGMT/HUMANITARIAN ASSIST(FORD IS)	9,140,000	DBB
PEARL HARBOR HI NS	NSWG 3 COMMAD AND OPERATIONS FACILITY	31,000,000	DB
POINT MUGU CA NAVBASE	AIRCRAFT DIRECT REFUELING STATIONS	3,100,000	DB
QUANTICO VA MCCOMBDEV CMD	ACADENMIC FACILITY ADDITION, SNCOA	12,080,000	DB
QUANTICO VA MCCOMBDEV CMD	BACHELOR ENLISTED QUARTERS, WTBN	37,810,000	DB
QUANTICO VA MCCOMBDEV CMD	STUDENT OFFICER QUARTERS, TBS, (CAMP BARRETT)	55,822,000	DB
QUANTICO VA MCCOMBDEV CMD	RESEARCH CENTER ADDITION, MCU	37,920,000	DB
QUANTICO VA MCCOMBDEV CMD	CONSTRUCT CONSOLIDATED ELEMENTARY SCHOOL	47,355,000	DB
ROTA SPAIN NS	AIR TRAFFIC CONTROL TOWER	23,190,000	DBB
SAN DIEGO CA MCRD	MARINE CORPS ENERGY INITIATIVE	9,950,000	DB
SAN DIEGO CA NAS NORTH IS	ROTARY HANGAR	67,160,000	DBB
SAN DIEGO CA NAVSTA	BERTHING PIER 12 REPLACEMNET & DREDGING, PHASE 1	108,414,000	DB
SAN DIEGO CA NAVSTA	BACHELOR QUARTERS, HOMEPORT ASHORE	75,342,000	DB
SASEBO JA COMFLEACT	WHOLEHOUSE IMPROVEMENT	10,769,000	DB
TWENTYNINE PALMS CA MAGCC	GTF-BACHELOR ENLISTED QUARTERS/PARKING STRUCTURE	53,158,000	DB
TWENTYNINE PALMS CA MAGCC	TANK VEHICLE MAINTENANCE FACILITY	5,991,000	DBB
VICENZA ITALY USAI	BDE COMPLEX - MAINT & OPS (INCR IV)	16,500,000	DB
VICENZA ITALY USAI	BDE COMPLEX - BARRACKS AND SUPPORT (INCR IV)	16,500,000	DB
WASH DC BOLLING AFB	JOINT AIR DEFENSE OPERATIONS CENTER	13,200,000	DB

FY 11 MCON, MCNR, Family Housing, Defense Project List



Installation	Title	Cost (\$000)	Design Level
WASH DC MCBKS	REPLACE INTERIOR PASSENGER LIFE QUARTERS #6	100,000	DB
WHITING FLD FL NAS	T-6 SOLO CAPABLE OLF (ALF SUMMERDALE)	29,082,000	DB
YOKOSUKA JAPAN COMFLEACT	W/H REVITALIZATION - SAKURA TOWER	17,479,000	DB
YORKTOWN VA	NAVY ORD CARGO LOGISTICS TRNG COMPLEX (CHEATHAM)	21,346,000	DB
YUMA AZ MCAS	AIRCRAFT MAINTENANCE HANGAR (JSF)	40,600,000	DBB
YUMA AZ MCAS	AIRCRAFT MAINTENANCE HANGAR (JSF)	63,280,000	DBB
YUMA AZ MCAS	SIMULATOR FACILITY (JSF)	36,060,000	DBB
YUMA AZ MCAS	UTILITIES INFRASTRUCTURE UPGRADES (JSF)	44,320,000	DBB
YUMA AZ MCAS	COMMUNICATION INFRASTRUCTURE UPGRADE (JSF)	63,730,000	DBB
YUMA AZ MCAS	INTERMEDIATE MAINTENANCE ACTIVITY FACILITY (JSF)	21,480,000	DBB
YUMA AZ MCAS	VAN PAD COMPLEX RELOCATION (JSF)	15,590,000	DBB

FY 12 MCON, MCNR, Family Housing, Defense Project List



Installation	Title	Cost (\$000)	Design Level
ANDERSEN AFB GUAM SAC	GUAM STRIKE-CLEAR WATER RINSE FACILITY	7,600,000	DB
ANDERSEN AFB GUAM SAC	GUAM STRIKE CONVENTIONAL MUNITION MAINTENANCE FAC	11,700,000	DB
ANDERSEN AFB GUAM SAC	PRTC - COMBAT COMMUNICATIONS TRANSMISSION SYS FAC	6,000,000	DB
ANDREWS AFB MD	DENTAL CLINIC REPLACEMENT	22,865,000	DBB
ANDREWS AFB MD	AMBULATORY CARE CENTER	249,000,000	DBB
ANDREWS AFB MD	FITNESS CENTER	34,600,000	DB
ANDREWS AFB MD	CONSTRUCT CHILD DEVELOPMENT CENTER	19,500,000	DB
ANDREWS AFB MD	CONSTRUCT CHILD DEVELOPMENT CENTER	19,500,000	DBB
ATSUGI JA NAF	CONVERSION, ON-BASE HIGH RISE (3042)	6,971,000	DBB
ATSUGI JA NAF	WHOLEHOUSE REVITALIZATION HIGH RISE (BLDG 3050)	16,073,000	DB
BARKING SANDS HI PMRF	NORTH LOOP ELECTRICAL REPLACEMENT	9,679,000	DBB
BARKSDALE	HYDRANT FUELING SYSTEM	6,200,000	DBB
BARSTOW CA MCLB	DIP TANK CLEANING FACILITY (YERMO AREA)	8,590,000	DB
BEAUFORT SC MCAS	VERTICAL LANDING PADS	21,096,000	DB
CAMP LEJEUNE NC MCB	ORDNANCE LOADING AREA ADDITION (NEW RIVER)	9,419,000	DBB
CAMP LEJEUNE NC MCB	SOF ARMORY FACILITY EXPANSION	6,670,000	DBB
CAMP LEJEUNE NC MCB	SQUAD BATTLE COURSE (TRAINING AREA EAST)	16,821,000	DBB
CAMP LEJEUNE NC MCB	AIRCRAFT MAINTENANCE HANGAR AND APRON (NEW RIVER)	69,511,000	DB
CAMP LEJEUNE NC MCB	2ND COMBAT ENGINEER MAINT/OP COMPLEX(COURTHOUSE B)	75,214,000	DB
CAMP LEJEUNE NC MCB	BACHELOR ENLISTED QUARTERS-WALLACE CREEK(HADNOT PT	27,439,000	DBB
CAMP LEJEUNE NC MCB	GTF-BASE ENTRY POINT AND ROAD (TRAINING ARE EAST)	81,008,000	DBB
CAMP LEMONIER DJIBOUTI	TAXIWAY ENHANCEMENT	10,800,000	DBB

FY 12 MCON, MCNR, Family Housing, Defense Project List



Installation	Title	Cost (\$000)	Design Level
CAMP LEMONIER DJIBOUTI	AIRCRAFT LOGISTICS APRON	35,170,000	DBB
CAMP LEMONIER DJIBOUTI	BACHELOR QUARTERS	43,529,000	DB
CAMP PENDLETON CA MCAS	MV-22 AVIATION PAVEMENT	18,530,000	DB
CAMP PENDLETON CA MCAS	MV-22 AVIATION FUEL STORAGE	6,163,000	DBB
CAMP PENDLETON CA MCAS	MV-22 DOUBLE HANGAR REPLACEMENT	48,345,000	DB
CAMP PENDLETON CA MCB	ARMORY, 1ST MARINE DIVISION (HORNO)	12,606,000	DB
CAMP PENDLETON CA MCB	INFANTRY SQUAD DEFENSE RANGE (SAN MATEO AREA (62))	29,187,000	DBB
CAMP PENDLETON CA MCB	GTF-INDIVIDUAL EQUIPMENT ISSUE WAREHOUSE (CHAPPO)	16,411,000	DB
CAMP PENDLETON CA MCB	GTF-NORTH AREA WASTE WATER CONVEYANCE (SAN MATEO)	78,271,000	DB
CAMP PENDLETON CA MCB	GTF-NEW POTABLE WATER CONVEYANCE (CHAPPO)	113,091,000	DB
CAMP PENDLETON CA MCB	INTERSECTION BRIDGE AND IMPROVEMENTS (MAIN GATE)	12,476,000	DB
CHARLESTON SC AFI	RED HORSE READINESS AND TRAINING FACILITY	9,000,000	DBB
CHARLESTON SC AFI	REPLACE FUEL STORAGE AND DISTRIBUTION FACILITY	24,868,000	DBB
CHERRY POINT NC MCAS	H-1 HELICOPTER GEARBOX REPAIR & TEST FACILITY	17,760,000	DBB
COMFLEACT YOKOSUKA JA	W/H REVITALIZATION, HIMAWARI HEIGHTS HI RISE(4309)	20,968,000	DB
COMFLEACT YOKOSUKA JA	WHOLEHOUSE REVITALIZATION, TOWNHOUSES, PHASE 1	10,339,000	DB
DIEGO GARCIA NSF	POTABLE WATER PLANT MODERNIZATOIN	35,444,000	DB
GREAT LAKES IL NAVSTA	DECENTRALIZE STEAM SYSTEM	91,042,000	DB
GREAT LAKES IL NH	FEDERAL HEALTH CARE FACILITY NHGL DEMOLITION	18,000,000	DB
GREAT LAKES IL NH	HEALTH CLINIC DEMOLITION	16,900,000	
GUAM MI NAVHOSP	HOSPITAL REPLACEMENT	117,294,000	DBB
GUANTANAMO BAY CUBA NS	WHOLEHOUSE REVITALIZATION, CARAVELLA & EVANS POINT	5,146,000	DB

FY 12 MCON, MCNR, Family Housing, Defense Project List



Installation	Title	Cost (\$000)	Design Level
GULFPORT MS NCBC	BRANCH HEALTH CLINIC	35,103,000	DBB
HICKAM AFB HI PACAF	UPGRADE REFUELER TRUCK PARKING AREA	5,200,000	DBB
IWAKUNI JAPAN MCAS	REVITALIZE NORTH SIDE TOWNHOUSES, PHASE 1	11,796,000	DB
IWAKUNI JAPAN MCAS	WHOLEHOUSE REVITALIZATION MIDRISE 955	13,828,000	DB
JACKSONVILLE FL NAS	P-8A TRAINING FACILITY	25,985,000	DBB
JACKSONVILLE FL NAS	BAMS UAS OPERATOR TRAINING FACILITY	4,482,000	DBB
JACKSONVILLE FL NAS	P-8A HANGAR UPGRADES	6,085,000	DBB
KANEOHE BAY HI MCB	MCAS OPERATIONS COMPLEX	57,704,000	DB
KEESLER AFB MS	VISITING QUARTERS 250RM	34,000,000	DB
KEESLER AFB MS	VISITING QUARTERS 250RM	34,000,000	
KINGS BAY GA NSB	WRA LAND/WATER INTERFACE	33,150,000	DBB
KINGS BAY GA NSB	CRAB ISLAND SECURITY ENCLAVE	52,913,000	DBB
MAYPORT FL NS	MASSEY AVENUE CORRIDOR IMPROVEMENTS	14,998,000	DBB
MECHANICSBURG NAVSUPPACT	ARMED FORCES RESERVE CENTER (PITTSBURGH)	13,759,000	DBB
NAS PATUXENT RIVER	AIRCRAFT PROTOTYPE FACILITY, PHASE 2	45,844,000	DB
NAVAL BASE KITSAP	EXPLOSIVES HANDLING WHARF #2 (BANGOR) INC 1 OF 4	78,002,000	DBB
NAVAL BASE KITSAP	EHW SECURITY FORCE FACILITY (BANGOR)	25,948,000	DBB
NAVAL BASE KITSAP	INTEGRATED DRY DOCK WATER TREATMENT FAC, PHASE 1	13,341,000	DBB
NAVAL BASE KITSAP	WRA VEHICLE BARRIERS (BANGOR)	17,894,000	DB
NAVBASE Guam	DPRI-FINEGAYAN WATER UTILITIES	77,267,000	DB
NAVSUPPACT BAHRAIN	BACHELOR ENLISTED QUARTERS	55,010,000	DBB
NAVSUPPACT BAHRAIN	WATERFRONT DEVELOPMENT, PHASE 4	45,194,000	DBB

FY 12 MCON, MCNR, Family Housing, Defense Project List



Installation	Title	Cost (\$000)	Design Level
NAVSUPPACT NORFOLK NSY	CONTROLLED INDUSTRIAL FACILITY	74,864,000	DBB
NEW ORLEANS LA HDQ 4TH MA	RESERVE TRAINING CENTER - MEMPHIS	7,949,000	DB
NEW RIVER NC MCAS	REPLACE DELALIO ELEMENTARY SCHOOL	23,135,000	DBB
NORFOLK VA LANTFLTHQSPACT	DECENTRALIZE STEAM SYSTEM	26,924,000	DB
NORFOLK VA NS	BACHELOR QUARTERS, HOMEPORT ASHORE	81,304,000	DB
NSA ANDERSEN	AAFB North Ramp Utilities, Inc 2 of 2	78,654,000	DB
NSA SOUTH POTOMAC	DECENTRALIZE STEAM SYSTEM (INDIAN HEAD MD)	67,779,000	DB
OCEANA VA NAS	SOF LOGISTICS SUPPORT FACILITY (DAM NECK)	14,402,000	DB
OCEANA VA NAS	SOF MILITARY WORKING DOG FACILITY (DAM NECK)	4,900,000	DB
PEARL HARBOR HI NS	NAVY INFORMATION OPERATIONS COMMAND FES FAC	7,492,000	DBB
PEARL HARBOR HI NS	ALTER WAREHOUSE SPACE	9,200,000	DBB
POINT MUGU CA NAVBASE	E-2D AIRCREW TRAINING FACILITY	15,377,000	DBB
QUANTICO VA MCCOMBDEV CMD	EMBASSY SECURITY GROUP FACS(C A LLOYD RANAGE AREA)	27,079,000	DB
QUANTICO VA MCCOMBDEV CMD	BACHELOR ENLISTED QUARTERS (MCAF)	31,374,000	DB
QUANTICO VA MCCOMBDEV CMD	ENLISTED DINING FACILITY (MCAF)	5,034,000	DB
QUANTICO VA MCCOMBDEV CMD	THE BASIC SCHOOL STUDENT QUARTERS - PHASE 6	28,488,000	DB
QUANTICO VA MCCOMBDEV CMD	ACADEMIC INSTRUCTION FACILITY	75,304,000	DB
QUANTICO VA MCCOMBDEV CMD	WASTE WATER TREATMENT PLANT - UPSHUR	9,969,000	DBB
QUANTICO VA MCCOMBDEV CMD	REALIGN PURVIS RD/RUSSELL RD INTERSECTION	6,442,000	DB
ROTA SPAIN NS	WHOLEHOUSE REVITALIZATION, LAS PALMERAS, PHASE 3	12,652,000	DBB
SAN DIEGO CA FLT&INDSUPCT	REPLACE FUEL STORAGE FACILITIES INCR 4	27,000,000	
SAN DIEGO CA NAS NORTH IS	ROTARY AIRCRAFT DEPOT MAINTENANCE FAC (N. ISLAND)	61,672,000	DBB

FY 12 MCON, MCNR, Family Housing, Defense Project List



<u>Installation</u>	<u>Title</u>	<u>Cost (\$000)</u>	<u>Design Level</u>
SAN DIEGO CA NAS NORTH IS	REPL FUEL STORAGE AND DISTRIB SYS (SAN CLEMENTE)	21,800,000	DBB
SAN DIEGO CA NAS NORTH IS	FITNESS CENTER, NORTH ISLAND	46,763,000	DBB
TRAVIS AFB CA	CONSTRUCT CHILD DEVELOPMENT CENTER (CDC)	17,500,000	
TWENTYNINE PALMS CA MAGCC	MULTI-PURPOSE BUILDING ADDITION (BRIDGEPORT)	19,238,000	DB
TWENTYNINE PALMS CA MAGCC	MULTI-USE OPERATIONAL FITNESS AREA	18,819,000	DB
TWENTYNINE PALMS CA MAGCC	GTF-TRACKED VEHICLE MAINTENANCE COVER	15,882,000	DB
TWENTYNINE PALMS CA MAGCC	CHILD DEVELOPMENT CENTER	23,743,000	DB
TWENTYNINE PALMS CA MAGCC	LAND EXPANSION	8,665,000	
VICENZA ITALY USAI	REPLACE VICENZA HIGH SCHOOL	43,886,000	DBB
WHIDBEY IS WA NAS	REPLACE FUEL PIPELINE (SEAPLANE BASE TO AULT FIELD	25,000,000	DBB
WHITING FLD FL NAS	TRUCK LOAD FACILITY	1,800,000	DB
WHITING FLD FL NAS	REPLACE LOAD/UNLOAD FACILITY	3,800,000	DB
WHITING FLD FL NAS	APPLIED INSTRUCTION FACILITIES, EOD COURSE (EGLIN)	20,620,000	DB
WHITING FLD FL NAS	TRUCK UNLOAD FACILITY	1,500,000	DB
YUMA AZ MCAS	JSF AUXILIARY LANDING FIELD (AUX 2 RANGE)	41,373,000	DBB
YUMA AZ MCAS	DOUBLE AIRCRAFT MAINTENANCE HANGAR (JSF)	81,897,000	DB
YUMA AZ MCAS	AIRCRAFT MAINTENANCE HANGAR (JSF)	39,515,000	DBB
Z/VARLOCS MILCON	UAS SATCOM RELAY PADS AND FACILITY	15,000,000	DBB