



# ACEC ENGINEERING EXCELLENCE AWARDS

**2025 ENGINEERING EXCELLENCE AWARDS GALA**

---

**TUESDAY, MAY 20, 2025**

GRAND HYATT WASHINGTON  
1000 H STREET NW, WASHINGTON, DC



# ENGINEERING & PUBLIC WORKS ROADSHOW

INFRASTRUCTURE WORKS



## We're Taking our Message on the Road!

The American Council of Engineering Companies (ACEC), American Public Works Association (APWA), and American Society of Civil Engineers (ASCE) are partners in a nationwide awareness effort to highlight the meaningful, transformational work of engineers and public works professionals with the Engineering and Public Works Roadshow.

Each Roadshow stop highlights engineering's essential value by showcasing our member firms' award-winning projects and the people who make them possible.



Learn more at [www.infrastructureroadshow.org](http://www.infrastructureroadshow.org)

## SPECIAL **THANKS**

ACEC thanks the following companies for their generous sponsorship and support of the 2025 Engineering Excellence Awards:

### DIAMOND



### AFTER-PARTY



### EMERALD







# WELCOME TO THE

## 2025 ENGINEERING EXCELLENCE AWARDS GALA

We hope you enjoy this celebration of the year's best engineering achievements.





# GALA EVENING

May 20, 2025

## WELCOME

ACEC PRESIDENT & CEO  
LINDA BAUER DARR

## PRESENTATION OF COLORS & NATIONAL ANTHEM

U.S. JOINT ARMED FORCES COLOR GUARD  
MARIA SCHAFF

## NATIONAL RECOGNITION AWARDS TRIBUTE

ACEC CHAIR  
GARY RABA

## DINNER

## NATIONAL AWARDS PRESENTATION

MASTER OF CEREMONIES  
PAUL MECURIO

## 2024 GRAND CONCEPTOR AWARD WINNING PROJECT

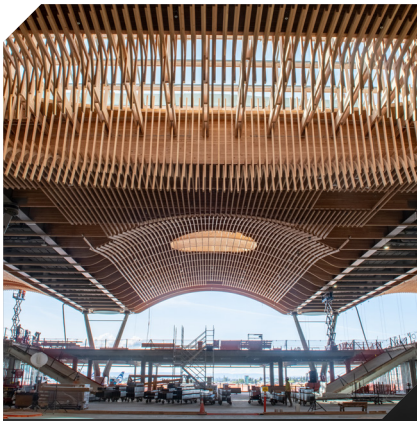
AECOM

MTA GRAND CENTRAL  
MADISON (FORMERLY  
EAST SIDE ACCESS)

The winner of the 2025 Grand Conceptor Award for the year's most outstanding engineering achievement will be selected from one of the eight Grand Award recipients and announced on stage during tonight's gala.







## KPFF, GRI & PAE

### **Project:**

Portland International  
Airport Terminal Core  
Redevelopment

### **Project Location:**

Portland, Oregon

### **Client:**

Port of Portland

## GRAND AWARD

The Portland International Airport (PDX) Terminal Core Redevelopment Project modernizes and expands one of America's favorite airports. Between outdated facilities, seismic vulnerabilities, and projections that showed travel demand would soon exceed terminal capacity, PDX needed a solution that would create more space, safer space, and do so while still delivering peerless passenger experience. In the interest of both time and efficiency, the team modernized the existing terminal in phases to minimize disruption, with the new expansion designed to exceed code for seismic resilience. The project features a 400,000-square-foot mass timber roof supported by more than 30 Y-shaped columns equipped with seismic isolators.



## Magnusson Klemencic Associates

### **Project:**

The Seattle Aquarium's  
Ocean Pavilion

### **Project Location:**

Seattle, Washington

### **Client:**

LMN Architects

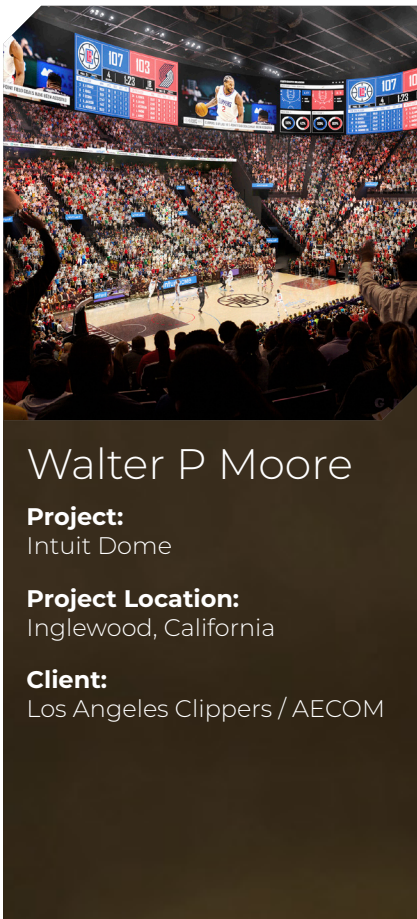
## GRAND AWARD

The Seattle Aquarium's Ocean Pavilion is a cutting-edge project centered around an innovative "Supertank," a one-of-a-kind sculptural concrete structure that holds 500,000 gallons of water and serves as the primary frame of the building. Optimized for marine life behaviors and benefits, this Supertank supports both public spaces and research labs. The tank also provides earthquake and windstorm protection by concentrating the weight of the building to mitigate soft soil that is liquefiable during an earthquake. The Supertank features a 50-foot cantilever, creating a column-free entry that offers visitors an immersive aquarium experience.



## GRAND AWARD

With its 516-foot-diameter and 366-foot height, Las Vegas' Sphere is the world's largest spherical structure, enclosing a bowl-shaped theater for 17,600 guests seated beneath a domed roof and suspended media plane. Designed using advanced engineering modeling tools, Sphere was prefabricated in sections to facilitate construction and reduce the need for temporary support. Through sophisticated detailing and carefully controlled tolerances, Sphere's prefabricated 400-foot dome was delivered to within about one inch of ideal geometry. Sustainability was a priority in the design of Sphere, as well as mitigating the unique challenges of a desert climate. Recycled materials were used throughout the structure, while the Exosphere's design allows for thermal expansion.



## GRAND AWARD

The new home of the NBA's Los Angeles Clippers, Intuit Dome, is the fulfillment of owner Steve Ballmer's vision for an iconic, environmentally friendly, community-and-fan-focused arena. The 18,000-seat venue anchors the 1.14-million-square-foot complex, which includes training facilities, team offices, and community courts. Because the complex is located just 1.25 miles from the Newport-Inglewood fault, seismic safety was of paramount concern. The team addressed this via an ingenious design that allows the roof to move independently from the main structure, "swishing like a hula skirt" around the rigid frame during earthquakes. As a fully electric facility with sufficient solar panels and batteries to power the arena for an entire concert or basketball game, Intuit Dome is the first NBA arena to achieve LEED Platinum certification under LEED v4.





HDR

**Project:**

Native Salmonid Conservation Facility

**Project Location:**

Usk, Washington

**Client:**

Seattle City Light

## GRAND AWARD

The Native Salmonid Conservation Facility is an initiative by Seattle City Light to protect and establish self-sustaining, naturally producing threatened Westslope cutthroat trout in the Pend Oreille River watershed. The state-of-the-art facility captures genetically pure fish from the basin's tributaries, spawns them, and returns the progeny to the natal streams. The facility also rescues trout from local streams and nurtures them through advanced aquaculture techniques, enhancing their survival chances, and aims to include endangered bull trout or mountain whitefish at the hatchery in the future. The project team overcame challenges such as site conditions and severe weather to provide extensive underground utility work and eight facility structures and three residences for facilities staff.



Wade Trim

**Project:**

Saddle Creek High Rate Treatment Basin

**Project Location:**

Omaha, Nebraska

**Client:**

City of Omaha Public Works Department

## GRAND AWARD

The Saddle Creek High Rate Treatment Basin (HRTB) marks a milestone achievement in the Clean Solutions for Omaha program aimed at reducing the impacts of combined sewer overflows (CSO) by 2027. Previously, untreated sewage overflowed into the Little Papillon Creek dozens of times per year. As Nebraska's first remote HRTB, Saddle Creek captures and treats combined sewage during storms, providing "equivalent to primary" treatment for flows up to 160 million gallons per day, and can screen, remove grit, and disinfect flows up to 320 million gallons per day during extreme events. Saddle Creek uses a gravity-flow-through design that moves flows in and out of the facility without major pumping. On the sustainability side, the project site involved remediating a former construction debris landfill, with more than 330,000 tons of piping, street debris, and fill material removed.



## HNTB Corporation

### **Project:**

Brightline Florida East-West Connector

### **Project Location:**

Orlando, Florida

### **Client:**

Florida East Coast Industries,  
Fortress Investment Group

## GRAND AWARD

Brightline is the 235-mile rail line that connects Orlando and Miami, two of America's biggest vacation and tourist destinations. For this project, the team completed a 38-mile east-west expansion of the line, connecting Cocoa and Orlando. Touted as a potential game-changer in American travel, Brightline sets a precedent for expanding the breadth and scope of the U.S. rail system by linking city pairs that are too far to drive but too close to fly. The Brightline Florida East-West Connector project is composed of more than 30 bridges, grading, drainage, communications, signal layout, and utility relocation. Delivered on time and within budget, the connector also has contributed to Brightline's sustainability impact, helping to remove three million vehicles from Florida's highways annually.



## HNTB Corporation and Jacobs Engineering

### **Project:**

Lynnwood Link Extension

### **Project Location:**

Lynnwood, Washington

### **Client:**

Sound Transit

## GRAND AWARD

The Lynnwood Link Extension expands the Sound Transit Link Light Rail system by 8.5 miles, stretching from Northgate Station in north Seattle to Lynnwood Transit Center, marking the system's first reach into Snohomish County. The project addresses the demand for sustainable, efficient transit in one of Washington State's most congested corridors. Lynnwood Link Extension offers seamless, traffic-free access to destinations such as downtown Seattle, University of Washington, and Sea-Tac International Airport. Link trains run every four to six minutes during peak hours; the service is expected to carry as many as 55,000 daily passengers within the next year. Through innovative tools like 3-D modeling, the project team was able to start construction before the full design was finalized.





## HDR

### **Project:**

TPF-5(372) Building  
Information Modeling (BIM) for  
Bridges and Structures

### **Project Location:**

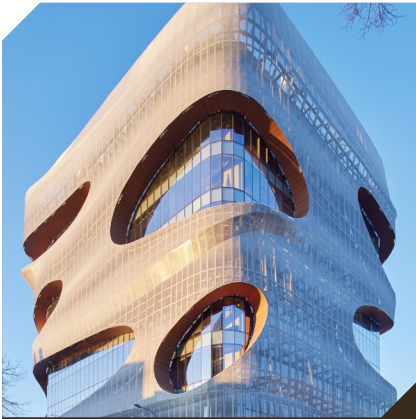
Ames, Iowa

### **Client:**

Iowa Department  
of Transportation

## HONOR **AWARD**

A group of U.S. state transportation agencies led by the Iowa Department of Transportation and the Federal Highway Administration commissioned a study to define and implement a national data standard for the use of Building Information Technology (BIM) for bridges and structures. As more designers look to BIM for bridges, this new unified standard will enable users to share data, irrespective of which BIM program is used—a ground-breaking development that will change the way bridges are designed for the next generation.



## HDR

### **Project:**

Anna-Maria and Stephen  
Kellen Building

### **Project Location:**

Rochester, Minnesota

### **Client:**

Mayo Clinic

## HONOR **AWARD**

Located on the campus of the world-renowned Mayo Clinic, the Anna-Maria and Stephen Kellen Building houses facilities focused on discoveries in neurosciences and cancer research. Inside the Kellen Building, researchers conduct both basic and translational research, with clinical practice and education all under the same roof. Innovative risk-based zoning allows varied hazard levels to cohabitate within the same building, encouraging collaboration and reducing the need for high-cost, hazard-intense laboratory space.



## Mason & Hanger

### **Project:**

New U.S. Embassy –  
Niamey, Niger

### **Project Location:**

Niamey, Niger

### **Client:**

U.S. Department of  
State – Bureau of Overseas  
Building Operations

## HONOR **AWARD**

An example of diplomacy in stone, the new U.S. Embassy in Niamey, Niger combines the best of American architecture with the beauty and majesty of Nigerien landscapes, with a modern design that honors local culture and adapts to local climate. The new embassy was designed with an eye toward sustainability, incorporating green building techniques like on-site water purification and natural shading systems. Certified LEED Platinum, the embassy incorporates a suite of energy-efficient features, and a state-of-the-art microgrid ensures the self-sufficient compound does not use local resources.



## Arup

### **Project:**

Richard Gilder Center  
for Science, Education,  
and Innovation

### **Project Location:**

New York, New York

### **Client:**

American Museum of  
Natural History

## HONOR **AWARD**

The Richard Gilder Center for Science, Education, and Innovation at New York's American Museum of Natural History serves as a connection point among 10 museum buildings, linking the entire campus and establishing a new entrance in Theodore Roosevelt Park. At the heart of the Gilder Center is its five-story Kenneth C. Griffin Exploration Atrium, which features flowing forms inspired by southwestern canyons. The structure is composed of shotcrete, a technique developed by museum naturalist Carl Ackley that involves spraying concrete directly on to rebar.





## Michael Baker International

### Project:

Three Sisters Bridges Rehabilitation

### Project Location:

Pittsburgh, Pennsylvania

### Client:

Allegheny County Department of Public Works

## HONOR AWARD

Built in the mid-late 1920s, the Sixth, Seventh, and Ninth Street Bridges – collectively known as the “Three Sisters Bridges” – span the Allegheny River and are crucial for connecting downtown Pittsburgh’s business district with North Shore landmarks like PNC Park and Acrisure Stadium. With each bridge showing its age in distinct ways, each was rehabilitated separately to address its unique aging challenges. The team was mindful of the historical significance of the bridges, using materials not normally used in modern bridge construction to maintain the look and feel of the past while ensuring structural integrity.



## Barr Engineering Co.

### Project:

I-35W Underground Stormwater Storage Facility

### Project Location:

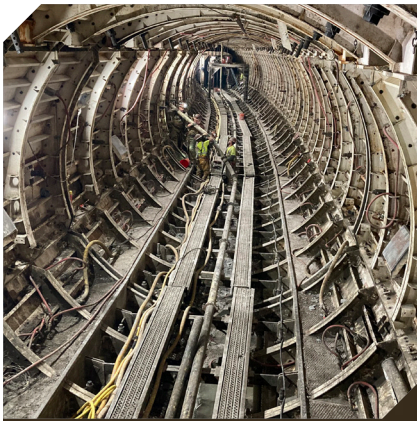
Minneapolis, Minnesota

### Client:

Minnesota Department of Transportation

## HONOR AWARD

I-35W is a major artery in Minneapolis, with traffic volume expected to reach more than a quarter of a million vehicles per day in the next decade. For decades, traffic lanes would flood after storms, bringing traffic to a standstill for hours. The project team developed Minnesota’s first vertical underground stormwater storage facility (SSF). Composed of six connected, 80-foot-deep chambers with a combined capacity equal to seven Olympic-size swimming pools, the cells significantly reduce stormwater flooding along the interstate, keeping traffic moving during storms.



## Parsons

### **Project:**

Deer Creek Sanitary Tunnel and Pump Station

### **Project Location:**

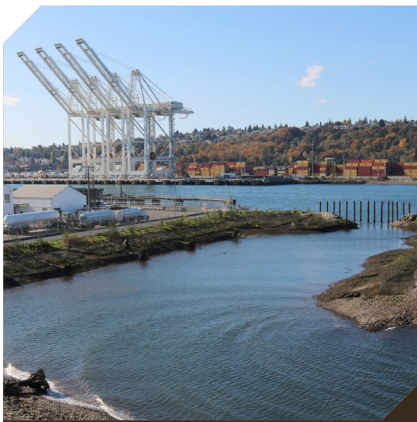
St. Louis, Missouri

### **Client:**

Metropolitan St. Louis Sewer District

## HONOR AWARD

The Deer Creek Watershed consists of approximately 24,000 acres served by more than 100 miles of sanitary and combined sewers. Part of the Metropolitan St. Louis Sewer District's Capital Improvement Program, this project aimed to mitigate basement backups and sewer overflows caused by heavy rains in a half-dozen surrounding communities. The project team designed a deep storage tunnel capable of holding 38 million gallons of stormwater. A pump station then drains the tunnel in less than 48 hours, with advanced hydraulic modeling to ensure efficiency and reliability.



## KPFF Consulting Engineers with Floyd|Snider & Vigor Industrial

### **Project:**

Vigor Industrial Harbor Island Habitat Restoration

### **Project Location:**

Seattle, Washington

### **Client:**

Vigor Shipyards

## HONOR AWARD

When Vigor purchased a 27-acre shipyard, the company assumed responsibility for decades of environmental damage caused by industrial operations. The Southwest Yard Restoration Project on Harbor Island transformed 2.7 acres of the shipyard into a new aquatic habitat refuge, restoring habitat for Chinook salmon, migratory birds, and other wildlife that had been exposed to hazardous substances over the years. The project team also modernized the shipyard operations with reconfigured piers, a revitalized drydock, and a new stormwater system.





## AECOM

### **Project:**

Design-Build Services for  
Accessibility Upgrades –  
Package 2

### **Project Location:**

New York, New York

### **Client:**

MTA C&D

## HONOR AWARD

Aimed at improving accessibility to one of the world's busiest transit systems, this project included installing 11 new elevators and replacing five across eight Metropolitan Transit Authority stations in Brooklyn, the Bronx, Manhattan, and Queens. The team also made improvements at five elevated, two below-ground, and one open-cut station. The project significantly improves subway access for disabled passengers, advancing MTA's goal of universally accessible stations that are aesthetically pleasing and provide an all-around positive commuter experience.



## Halff

### **Project:**

RM 620 Railroad Overpass and  
Roundabout

### **Project Location:**

Round Rock, Texas

### **Client:**

City of Round Rock

## HONOR AWARD

The RM 620 Railroad Overpass and Roundabout addresses long-standing traffic congestion caused by an at-grade railroad crossing frequently blocked by slow-moving rock trains. RM 620 is an essential roadway in the Round Rock community, serving commuters, area businesses, a residential neighborhood, and both the high school and medical center. The project team developed a solution that increased traffic capacity while minimizing environmental and property impact. They created an at-grade roundabout intersected by the railroad—with a bridge that handles 90 percent of the traffic spanning the entirety of the roundabout.



## Jacobs

### **Project:**

Seattle Waterfront  
Overlook Walk

### **Project Location:**

Seattle, Washington

### **Client:**

City of Seattle – Office of the  
Waterfront and Civic Projects

## HONOR **AWARD**

Seattle's Overlook Walk is an inviting and accessible connection between Pike Place Market and the Seattle Waterfront, two of the Emerald City's most iconic attractions. The project team designed an elevated park that includes ramps, stairs, elevators, a café, a play area, and landscaped open space, offering room to explore when wanted and rest when needed. Overlook Walk has quickly become a Seattle landmark, transforming a challenging 100-foot climb into a destination for tourists and residents alike.



## Jacobs Engineering Group Inc.

### **Project:**

Northwest Extension Phase II,  
Light Rail Extension

### **Project Location:**

Phoenix, Arizona

### **Client:**

Valley Metro Rail

## HONOR **AWARD**

The Valley Metro Northwest Extension Phase II added 1.6 miles of new track to Phoenix's light rail system, improving connectivity for residents of the West Valley and enabling access to educational, employment, and entertainment opportunities that might otherwise be out of reach. Key achievements of the project include incorporation of a park-and-ride garage to reduce its environmental footprint, \$60 million in value engineering (VE) savings, the Valley's first aerial multimodal transit center, and a rail-only bridge spanning all lanes of I-17, enabling future freeway expansion.





## RK&K

### **Project:**

I-66/Nutley Street Interchange

### **Project Location:**

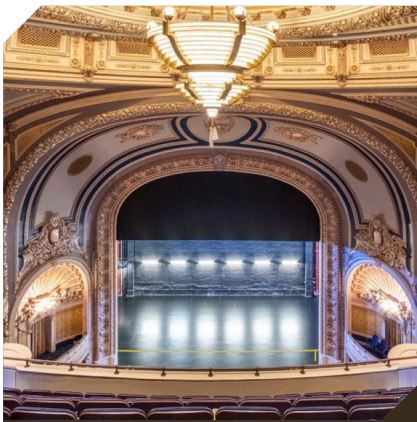
Fairfax County, Virginia

### **Client:**

Virginia Department of Transportation (Owner) and FAM Construction, LLC (Client)

## HONOR AWARD

Part of the Virginia Department of Transportation's (VDOT) \$3.7 billion Transform I-66 Outside the Beltway Project, the I-66/Nutley Street Interchange in a heavily populated part of Northern Virginia was originally planned as a diverging diamond interchange that would have required replacing an existing bridge and constructing a second. But the project team had other ideas, introducing a partial cloverleaf interchange design with double roundabouts while reusing the existing bridge – eliminating the need for a second structure. The project reduced costs, construction time, and environmental impacts, while enhancing traffic flow and safety.



## Langan

### **Project:**

TSX Broadway

### **Project Location:**

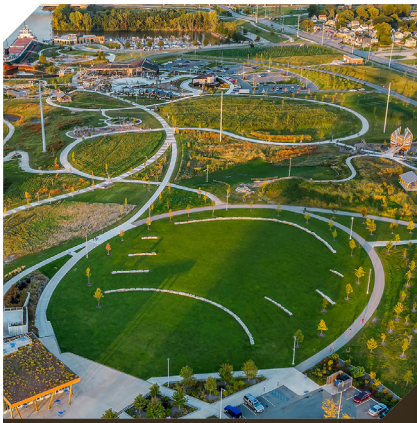
New York, New York

### **Client:**

L&L Holding Company (acting as Development Manager)

## HONOR AWARD

The TSX Broadway project in New York's Times Square transformed a 46-story hotel into a modern hotel and retail complex, all while incorporating the historic Palace Theatre. The project involved lifting the century-old theater an astonishing 31 feet into the air to create room for retail space below. The team provided the geotechnical engineering services for this project, in which excavation was performed while the theater was raised. This approach allowed for all below-grade and bracing work to occur simultaneously, minimizing disruption to one of the nation's busiest intersections.



## SmithGroup

### **Project:**

Glass City Metropark

### **Project Location:**

Toledo, Ohio

### **Client:**

Metroparks Toledo

## HONOR **AWARD**

The Glass City Metropark project transformed a 70-acre industrial brownfield into a vibrant urban park. Toledo, Ohio, became known as the Glass City in the 1800s when it emerged as a major manufacturer of glass and a center of industry. The Metropark site was once home to a coal-fired power plant, which left the site covered in several feet of fly ash. The new design prioritized sustainable development and landscape resilience, while addressing soil issues created by the power plant. The park now includes three miles of nature trails, a marina, and recreated habitats.



## Burns and McDonnell

### **Project:**

R.D. Morrow Repower Project

### **Project Location:**

Purvis, Mississippi

### **Client:**

Cooperative Energy

## HONOR **AWARD**

The R.D. Morrow Generating Station Repower Project transformed Cooperative Energy's aging coal-fired facility into a state-of-the-art natural gas combined-cycle plant. Utilizing an innovative heat recovery repower strategy, the project team incorporated existing infrastructure with advanced turbine technology. This initiative nearly tripled the plant's capacity – and halved its carbon emissions. The team also prioritized community and employee engagement; the project was built primarily by crews from the area, with those crews achieving more than 1.9 million work hours with zero safety incidents.

# 2025 NATIONAL RECOGNITION AWARD WINNERS

## ACEC ALABAMA

### Barnett Jones Wilson LLC

Smart Communities & Innovation Building

## ACEC ALASKA

### Tetra Tech

Central Transfer Station

## ACEC ARIZONA

### Haley & Aldrich, Inc.

Kingman Municipal Airport  
Dross Remediation

### HDR

Virgin River Bridge No. 1

### Kimley-Horn and Associates, Inc.

Tonto Creek Bridge

## ACEC ARKANSAS

### CRIST ENGINEERS, INC.

Lake Ouachita, Blakely Mt.  
Tunnel, Lake Tap and Intake

## ACEC CALIFORNIA

### Anchor QEA

Scorpion Anchorage  
Pier Replacement

### Arcadis U.S., Inc.

Sterling Natural  
Resource Center

### Arup US, Inc.

Delta Sky Way at LAX

### Atlas Technical Consultants

Implementation of Stop-and-Go  
Inertial Profiler Project, Caltrans  
Inertial Profiler Certification Program

### BKF Engineers

Brickyard Cove at McLaughlin  
Eastshore State Park

### Kier + Wright Civil Engineers and Surveyors, Inc. and Schaaf & Wheeler Consulting Civil Engineers

Boulder Creek Pipeline  
Replacement Project

### MNS Engineers and HDR

SFCTA Yerba Buena Island I-80/  
Southgate Road and Interchange

### Stantec Inc.

Friant-Kern Canal Middle  
Reach Phase 1

### West Yost

Regional Surface Water  
Supply Project

## ACEC COLORADO

### Calibre Engineering/S2o and Goodwyn Mills Cawood

Montgomery Whitewater Park

### KL&A, Engineers & Builders

Boulder Community Hospital  
Deconstruction and Steel Reuse

### Muller Engineering Company

North I-25 Segment 6

### Stanley Consultants

University of Washington Power  
Plant Upgrade

## ACEC-CT

### BL Companies, Inc.

Harbor Brook  
Channel Improvements

### WSP USA Inc.

The Rehabilitation of Bridge  
Nos. 03532 & 00107 I-95 NB  
Exit 27A to Rt. 8 NB,  
Bridgeport, CT

## ACEC-FL

### GFT

Henry E. Kinney Tunnel  
Rehabilitation and Pedestrian Plaza

### HDR

I-75 at Colonial Boulevard  
Design Build

### Wade Trim

Harbour Island Force  
Main Replacement

### WGI, Inc.

SR 821 Widening from SR 836 to  
NW 106th Street

## ACEC GEORGIA

### Freese and Nichols, Inc., JDS, Inc., and Gwinnett County Department of Water Resources

Eastern Regional Infrastructure Project

### Gresham Smith

Cheshire Bridge Road Over  
CSX Emergency Bridge Repair

### Terracon

Hyundai Motor Group  
Metaplant America (HMGMA)

## ACEC HAWAII

### AECOM

Punaluu Stream  
Restoration Project

## ACEC OF IDAHO

### Shannon & Wilson

Unbonded Concrete  
Overlay Project

## ACEC ILLINOIS

### Ardmore Roderick

Jackson Park Mobility  
Improvements Bid Package 1

### Ciorba Group, Inc.

Bob Michel Bridge Rehabilitation:  
Connecting Communities

### CMT; HLR; Thomas; BLA; BMcD; V3; Civiltech; Benesch; Clark Dietz; H&H/GZA

Longmeadow Parkway Corridor  
and River Bridge

### Engineering Enterprises, Inc. (EEI)

A Lead-Free Community



**HDR/WSP**

IDOT Pump Station No. 4  
Reconstruction

**IMEG**

New Rockford Public Library

**ACEC INDIANA****American Structurepoint, Inc.**

Emerson Avenue Corridor

**American Structurepoint, Inc.**

Peter J. Schickel Way Corridor

**Circle City Aviation Partners**

IND RW 5R-23L & TW D Strengthening  
& Capacity Enhancement

**Clark Dietz, Inc.**

Kokomo Stellantis EV Plant – Stormwater  
and Roadway Improvements

**Crawford, Murphy & Tilly**

US 31 & 236th Street New Interchange

**Lochmueller Group, Inc.**

I-69 Finish Line: Contract 4, Morgan and  
Johnson Counties

**ACEC/IOWA****HDR**

SIRWA Water Treatment Plant

**Klingner & Associates, P.C.**

Fort Madison Marina Rehabilitation

**Stanley Consultants**

United States Geological Survey  
Hydrologic Instrumentation Facility

**ACEC KANSAS****Black & Veatch**

Tomahawk Creek Wastewater  
Treatment Facility

**GBA**

Route D RSA

**HNTB Corporation**

Kansas Turnpike Cashless  
Tolling Conversion

**JEO Consulting Group, Inc.**

K-96 Pavement Replacement &  
Expansion – Survey Services

**GFT**

159th Street, US-54/400 to  
Central Avenue

**ACEC-KY****Gresham Smith**

Downtown Danville Streetscape

**HDR/Parsons**

Richwood Intersections

**ACEC OF MAINE****Haley Ward, Inc.**

Katahdin Woods and Waters National  
Monument Tekakapimək Contact Station

**HNTB Corporation**

Madawaska-Edmundston  
International Bridge

**ACEC/MD****GFT**

Paw Paw Tunnel Slope  
Stabilization Project

**ACEC/MA****Delve Underground**

Sumner Tunnel Reconstruction

**Fitzemeyer & Tocci  
Associates, Inc.**

CPH Regional Care Pavilion

**Haley & Aldrich, Inc.**

Lyrik – Air Rights Parcel 12

**HDR**

Worcester Union Station  
Accessibility Improvements

**Howard Stein Hudson**

Tremont Street Multimodal Improvements

**Nitsch Engineering**

Boston Green Infrastructure Handbooks

**Nitsch Engineering**

Overlook Terrace at Orient Heights

**Rosales +**

East Midtown Greenway 54th  
Street Bridge

**Stantec Inc.**

L1332-C4 Terminal B-C Main Roadways

**Weston & Sampson**

Comprehensive Renovation  
Design to DPW Facility

**ACEC/MW****AECOM**

WMATA Battery-Electric Bus Fire  
Hazard Analysis

**Black & Veatch**

Noman M. Cole Jr. Pollution Control  
Plant B3 Improvements

**EBA Engineering, Inc.**

Lane Place Pedestrian Bridge  
Emergency Replacement

**Jacobs**

Motor Control Centers and Distribution  
Centers Replacement Project

**Precision Systems, Inc.**

11th Street N.W. Bus Priority Improvement

**PRIME AE Group, Inc., FOXXSTEM  
and KCI Technologies, Inc.**

Cleveland Park Streetscape and  
Drainage Improvement Project –  
Construction Management Services

**Vanasse Hangen Brustlin, Inc. (VHB)**

DDOT/DC Smart Street Lighting P3

**Vanasse Hangen Brustlin, Inc. (VHB)**

I-66 ITS Express Lanes System and  
Field Level Subs

**WSP USA Inc.**

Rehab of Duke Street (Rt 236)  
Bridge over I-395

## ACEC/MICHIGAN

### HED

H-STEM Health Technologies Complex

### HNTB Corporation & AECOM

Innovate Mound

### Wade Trim

Ford Dearborn Campus  
Stormwater Management

### Williams & Works

Greenville WWTP Improvements –  
Contract 2

## ACEC/MN

### Barr Engineering Co., Brierley Associates, TKDA, and Kraemer North America-Nicholson Construction Joint Venture

Morningside Neighborhood Flood  
Risk Reduction

### Bolton & Menk

TH 41 Downtown Improvements

### HGA

The Blake School –  
Early Learning Center

### Houston Engineering, Inc.

Pelican Rapids Dam Removal  
and River Restoration

### KFI, HDR, and MBJ

Allina Health, Central Utility Plant

### Meyer Borgman Johnson

Treetop Trail at the Minnesota Zoo

## ACEC/MS

### Wages Civil and Burns Cooley Dennis, Inc.

Making It Happen

### Wages Civil and Burns Cooley Dennis, Inc.

Powering UP Mississippi

## ACEC/MISSOURI

### IMEG

21c Museum Hotel

### Lochmueller Group, Inc.

Rex Whitton Expressway &  
Lafayette Interchange Mitigation

### Parsons

I-270 North Design-Build Project

### SCI Engineering, Inc.

Dierbergs Crestwood Crossing

### Walter P Moore

F&M Bank Arena

## ACEC-MONTANA

### DJ&A

Montana Museum of Art and Culture  
and Campus Drive/Memorial Row  
Greenway Improvements

### HDR

Big Sky Tram Power Line

### HDR

I-90 Yellowstone River Bridges

### Sanbell, formerly Sanderson Stewart

Highway 64 Improvements

## ACEC NEBRASKA

### HDR

Fremont Wastewater Treatment Plant  
Improvements and Expansion

### HDR

Kiewit Luminarium

### HDR

Papillion Creek Water Resource  
Recovery Facility Biosolids and Energy  
Improvements 2022 – Biogas  
Conditioning System

### HDR

Southern Sarpy Wastewater System

### Morrissey Engineering

Joslyn Art Museum Expansion

## ACECNJ

### Dewberry

Route 295/Route 42, Missing Moves, Bellmawr

### IH Engineers, P.C.

River Road (CR 622) Bridge over Route 287  
Superstructure Replacement

### Jacobs

GSP Superstructure  
Replacement 106.3-106.5

### Loring Consulting Engineers, Inc.

NJ Executive Statehouse  
Renovation & Restoration

### Michael Baker International

Weldon Road over Route 15 Emergency  
Bridge Replacement

### Stantec Inc.

Rt. 3, Rt. 46, Valley Rd. & Notch Rd.  
Int. Contract B

### TPD

Rehab of Bridge 140.4 over Assunpink Creek

### Urban Engineers, Inc.

NJ TRANSIT Elizabeth Station Reconstruction

### WSP USA Inc.

Washington Road (CR 571) Bridge over  
D&R Canal

## ACEC NEW MEXICO

### Molzen Corbin

US 285 Corridor Improvements

### Wilson & Company, Inc., Engineers & Architects

NM I-25 La Bajada Slope Mitigation

## ACEC NEW YORK

### Burns and McDonnell

Recovery, Recycle, and Reuse:  
Spent Deicing Fluid

### COWI and Scape Landscape Architecture

Living Breakwaters

**D&B Engineers and Architects, DPC**

Ocean Beach Flood Mitigation & Resiliency Project

**DeSimone Consulting Engineering**

Winthrop Center

**H2M architects + engineers**

Downtown Sewer Capacity Expansion

**HDR**

MTA 2025-2044 20-Year Needs Assessment

**HNTB-LiRo Joint Venture**

East Side Coastal Resilience – Project Area 2

**HNTB New York Engineering and Architecture, P.C.**

Newark Liberty International Airport, Terminal C, Recomposure Benches

**Jacob Feinberg Katz & Michaeli Consulting Group LLC**

New NYPD 116th Precinct Station House Fosters Community Engagement

**Parsons**

The Restoration of an American Icon – The Brooklyn Rehabilitation Project

**Thornton Tomasetti**

Buffalo AKG Common Sky

**TYLin**

Central Park Drives: Redesigning for the Mobility

**WSP, Formerly AKF**

NYU Rubin Hall Decarbonization

**ACEC/NC**

**GFT**

Complete 540: N.C. 55 Bypass to East of Pierce Olive Road

**McKim & Creed and CLH design, P.A.**

Wake Tech East Public Safety Simulation Complex

**ACEC OHIO**

**American Structurepoint, Inc.**

Massillon Road Roundabouts

**Jones & Henry Engineers**

Ford Road Pump Station Replacement

**Stantec Inc.**

King Avenue/Grandin Road Bridge Replacement

**ACEC OKLAHOMA**

**Benham Design, LLC**

Yale Avenue Widening – 81st to 91st Street

**Freese and Nichols, Inc.**

Stephenson Park and 4th Street Improvements

**Freese and Nichols, Inc.**

The Clearpond Road Culvert

**ACEC OREGON**

**David Evans and Associates, Inc.**

I-5 over SW 26th Ave. Bridge Replacement

**HDR**

Mirror Pond Boardwalk

**Parametrix**

A Better Red

**ACEC/PA**

**HDR**

Building on the East Busway

**Langan Engineering and Environmental Services**

Swarthmore College Sharples Dining Hall and Community Commons

**Michael Baker International**

DuBois ATA Operations Facility

**Michael Baker International**

SR 28 Highland Park Interchange Improvement Project

**PENNONI**

Bridge Authoring Digital Delivery Pilot Project

**GFT**

New Fayette County Jail

**ACEC TENNESSEE**

**Allen & Hoshall**

National Civil Rights Museum Legacy Expansion

**Barge Design Solutions**

Murray Lane and Holly Tree Gap Roundabout CEI Services

**CDM Smith**

Tennessee Statewide Vulnerable Road User Assessment

**Gresham Smith**

Ultium Cells Spring Hill Battery Manufacturing Plant

**Kimley-Horn**

Activating Memphis Early Stage Investment

**ACEC TEXAS**

**BGE, Inc.**

Cinco MUD No. 1 Alternative Water Resources

**Bridgefarmer & Associates, Inc.**

Griggs Road Mykawa Road Rail Safety Improvements Study

**Burns and McDonnell**

Lunar Production and Operations Center

**Kimley-Horn and Associates, Inc.**

Northwest Downtown Street Rehabilitation

**Lockwood, Andrews & Newnam, Inc.**

Northeast Transmission Line

**SAM, LLC**

TxDOT El Paso District Border Highway East Study

**Walter P Moore/ Martinez Moore Engineers**

TMC3 Collaborative Building



## **ACEC UTAH**

### **HNTB Corporation and Ames Construction**

West Davis Corridor

### **Michael Baker International**

Navy Reserve Center at Hill Air Force Base

## **ACEC VIRGINIA**

### **HNTB Corporation**

I-95 Express Lanes  
Fredericksburg Extension

### **Kimley-Horn**

Belmont Bridge Replacement

### **Kimley-Horn**

Resort Area Mobility Plan

### **Wallace Montgomery**

Albemarle Intersection Improvements  
Bundling Design-Build

## **ACEC WASHINGTON**

### **Brown and Caldwell**

West Point Power Quality Improvements

### **HDR**

Fry Creek Pump Station

### **HDR**

Marion Street Pedestrian  
Bridge Replacement

### **HDR**

Nelson Dam Removal

### **Shannon & Wilson**

8801 East Marginal Way South –  
Remediation and Habitat Creation

### **Shannon & Wilson**

Glenallen Response Base Hill  
Slope Stabilization

### **Shannon & Wilson | WSP**

Index-Galena Road Flood  
Repair Project

## **ACECWV**

### **HDR**

I-64 Improvement and Kanawha  
River Bridge

### **The Thrasher Group, Inc.**

Statewide Broadband Study

## **ACEC WISCONSIN**

### **CBS Squared, Inc.**

City of Bloomer – Street Improvements  
and Lead Removal

### **IMEG**

Oregon Public Library

## EEA JUDGES

**Amanda Rogers****Chief Judge**

The Port Authority of NY and NJ  
Norwalk, CT

**James Fallon**

Connecticut Department  
of Transportation  
Newington, CT

**Manar Nashif**

Illinois State Toll  
Highway Authority  
Downers Grove, IL

**Julie Allen**

LA Sanitation and Environment  
Los Angeles, CA

**John W. Fleming**

Southern Carolina Regional  
Development Alliance  
Brunson, SC

**James Nelson**

Iowa Department  
of Transportation  
Ames, IA

**Dina Aryan-Zahlan**

Port of Los Angeles  
San Pedro, CA

**Marshall T. Hampton**

City of St. Petersburg  
St. Petersburg, FL

**Parth Oza**

New Jersey Department  
of Transportation  
Trenton, NJ

**Matthew J. Bandelt**

New Jersey Institute  
of Technology  
Newark, NJ

**Richard Kenney**

District Department  
of Transportation  
Washington, DC

**Meg Pirkle**

Georgia Department of  
Transportation  
Atlanta, GA

**Luciana Burdi**

Massachusetts Port Authority  
East Boston, MA

**Lisa Klein**

Metropolitan Transportation Commission  
and Association of Bay Area Governments  
San Francisco, CA

**Matt Preedy**

Sound Transit  
Seattle, WA

**David Carol**

American Public  
Transportation Association  
Washington, DC

**Lori Lange**

Tennessee Department  
of Transportation  
Nashville, TN

**Greg Schieber**

Kansas Department  
of Transportation  
Topeka, KS

**Anthony “Tony” Davit**

Greater Orlando  
Aviation Authority  
Orlando, FL

**Blaine Leonard**

Utah Department  
of Transportation  
Salt Lake City, UT

**Catherine Sheridan**

Triborough Bridge and Tunnel  
Authority/MTA Bridges and Tunnels  
New York, NY

**Hanif Drzal**

U.S. Army Corps of Engineers, Baltimore  
District Chief, Engineering Branch  
Washington, DC

**Ian F. Mitchell**

U.S. Army Corps of Engineers,  
Louisville District  
Louisville, KY

**Leonard “Lenny” P. Singh**

Ameren Illinois  
Collinsville, IL

**Shannon Spence**

Prince William Water  
Woodbridge, VA

**Mark Studt**

Montana Department  
of Transportation  
Helena, MT

**Steve Travia**

DuPage County Division  
of Transportation  
Wheaton, IL

**Scott Turnbow**

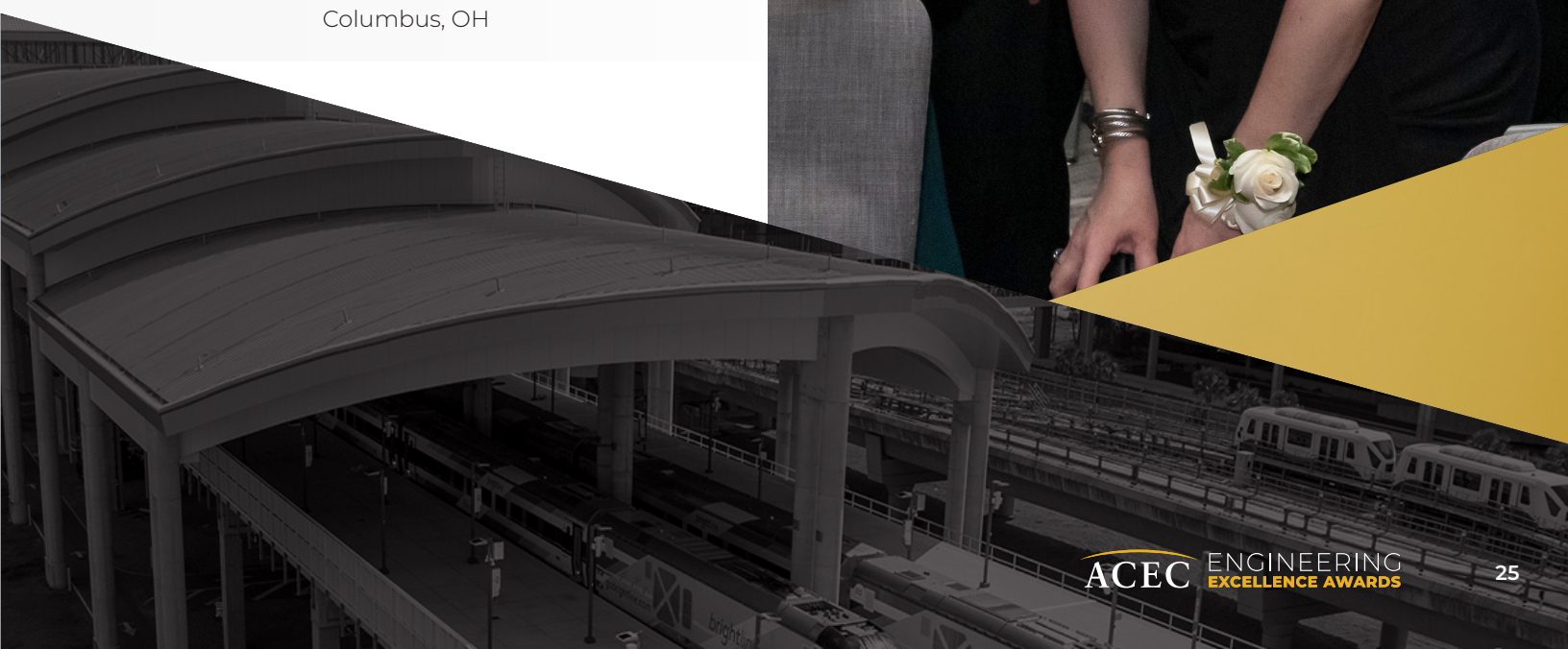
Tennessee Valley Authority  
Chattanooga, TN

**Nathan Yokoyama**

Charleston County  
Aviation Authority  
Awendaw, SC

**James D. Young**

Division of Design  
and Construction  
Columbus, OH





# ACEC ENGINEERING EXCELLENCE AWARDS



## EEA COMMITTEE

**Nancy A. Gruwell**

**Chair**

HDR

Omaha, NE

**Mauri Riesenber**

**Vice Chair**

STV

Franklin, TN

**Kasey Anderson**

ACEC Tennessee

Nashville, TN

**Andrew J. Cancia**

Langan

New York, NY

**Amy J. Collins**

GFT

Camp Hill, PA

**Jeffrey Druckman**

Bowman

Lisle, IL

**Matthew P. Hirst**

Horrocks

Salt Lake City, UT

**Andrew Keaschall**

Benesch

Chicago, IL

**Melvin Williams**

Terracon

Charleston, SC

**Theresa Christanti**

ACEC

Washington, DC





# SEE YOU LATER IN SAN DIEGO



ACEC

**2025 FALL  
CONFERENCE**

OCTOBER 5-8 | SAN DIEGO



# ACEC

## ENGINEERING EXCELLENCE AWARDS



@ACEC-National



@ACECNational



@MeetACEC  
@ACEC\_National



@ACECNational



@ACEC.National



Acecnational